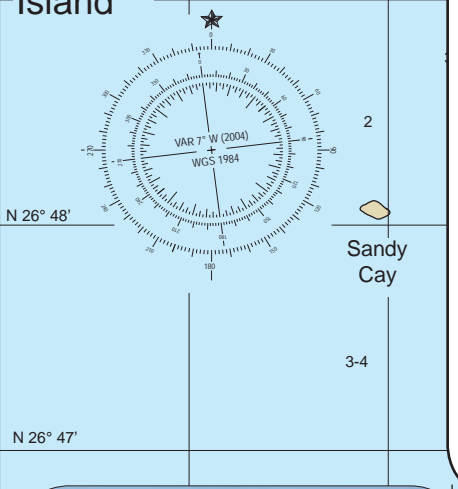


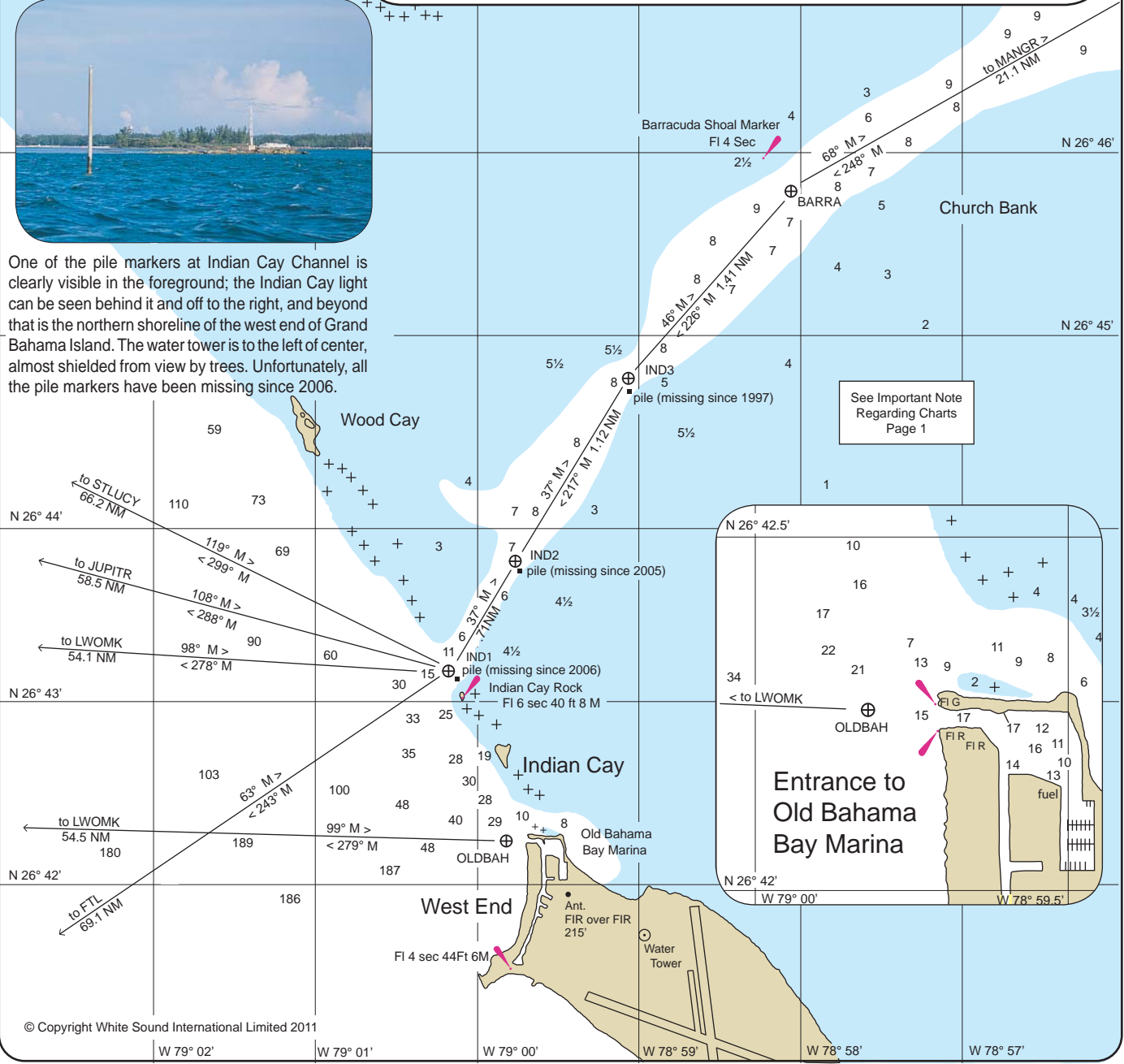
# Indian Cay Channel and West End, Grand Bahama Island

The water tower at West End and the tall stand of casuarinas on Sandy Cay six miles to the north can be seen for about 8 miles. These are the first landmarks one will see when approaching West End. The entire area between Sandy Cay and West End is fairly shallow and strewn with rocky bars and reefs, but Indian Cay Channel, which now carries about 6' MLW ( 8-9' at high tide), is a viable route through the area. Boats drawing more than 5½' will need tide help or should go about 4 NM north of Sandy Cay. Indian Cay Channel is supposed to be marked with three pilings, but no pilings have been in place since 2006. There is a light on a small steel tower on Indian Cay Rock. **The light is not a marker for the deepest water; the pilings are ... or were.** The pilings marked the south side of the "channel," and the waypoints IND1, IND2 and IND3 were positioned in the middle of the channel about 50' north of the piling locations. So, until new pilings are installed, use the waypoints (and your eyes) to transit this area in the deepest water. The Barracuda Shoal marker, located northeast of Indian Cay Channel, is mounted on the shoal itself and should be given about a ¼ NM berth; go SE of it. Entrance to Old Bahama Bay Marina is from the west. The channel is wide and deep (15-17'). Entry is straightforward except for a breakwater extending across the channel after you are inside. Leave it to port. Proceed eastward around the breakwater, and when you cannot go further east, turn to starboard to enter the main marina basin. See page 25 for waypoint coordinates.



One of the pile markers at Indian Cay Channel is clearly visible in the foreground; the Indian Cay light can be seen behind it and off to the right, and beyond that is the northern shoreline of the west end of Grand Bahama Island. The water tower is to the left of center, almost shielded from view by trees. Unfortunately, all the pile markers have been missing since 2006.

For continuation see pages 20-21



For continuation see pages 20-21